

PDX 2045 Online Open House 2

PDX's Social and Economic Impact

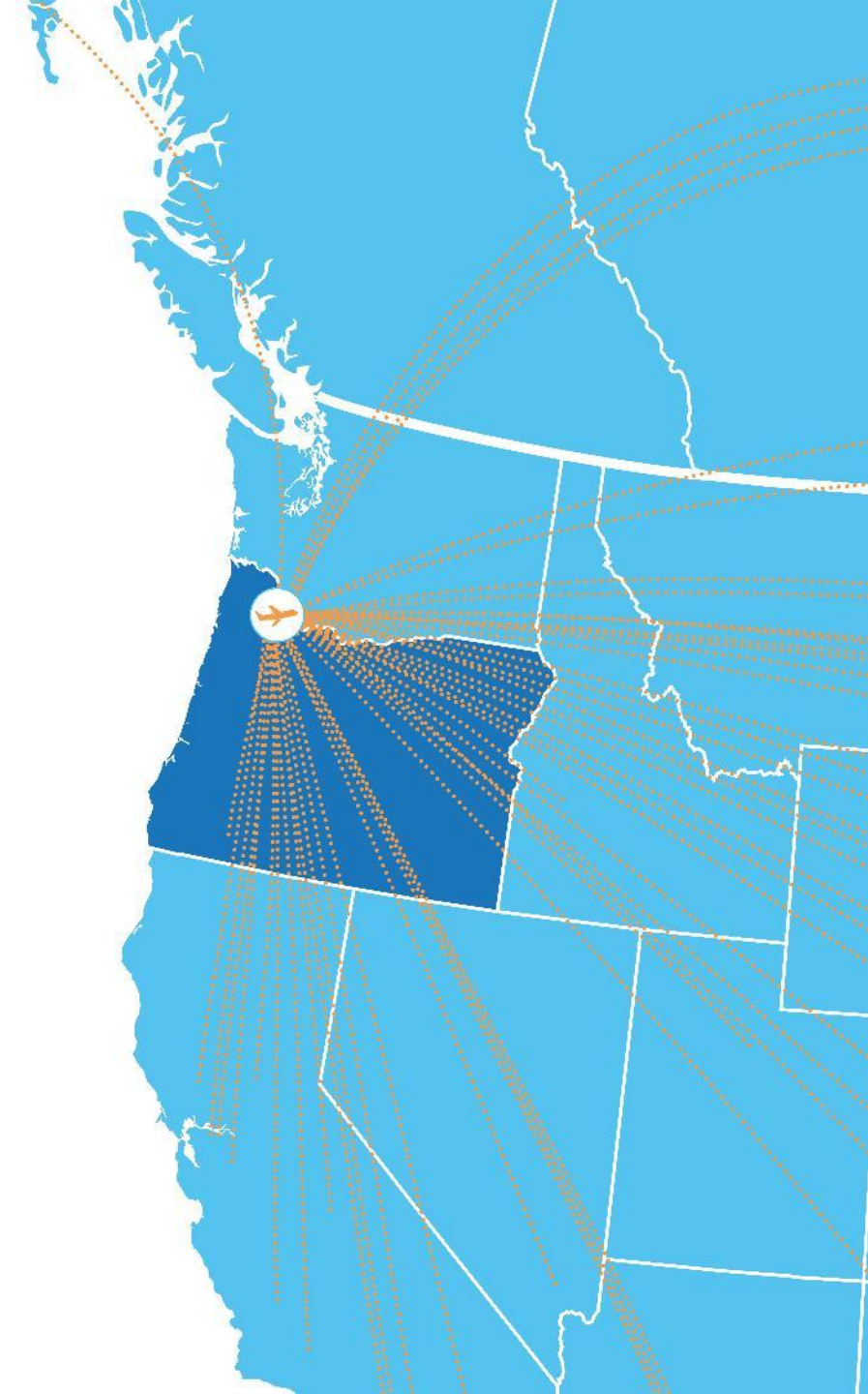
We're an **economic engine**
for our region, creating **opportunity**
for **everyone** who lives and works here

Supports over

15,000 jobs

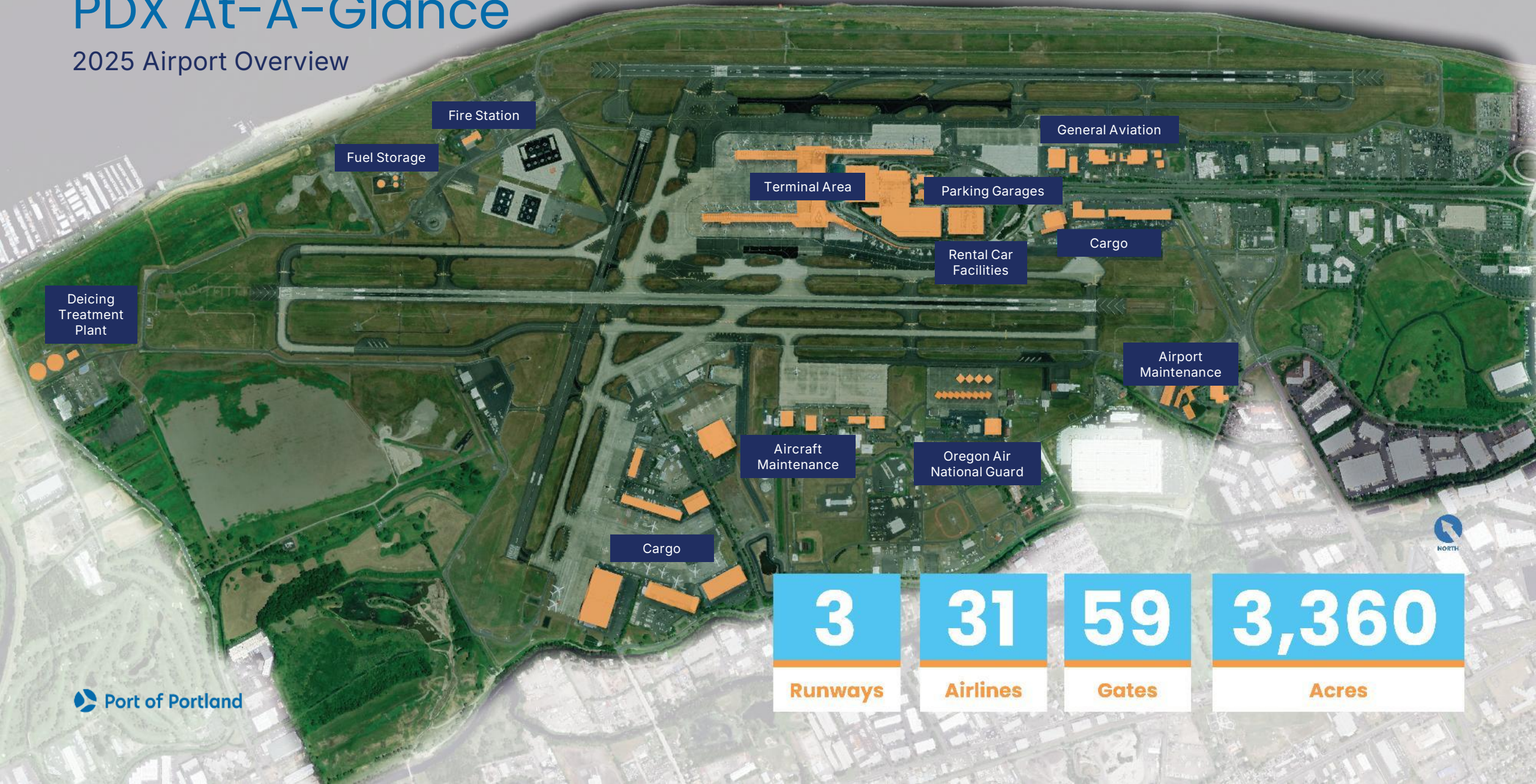
Contributes nearly

\$3B per year to the
local economy



PDX At-A-Glance

2025 Airport Overview



3

Runways

31

Airlines

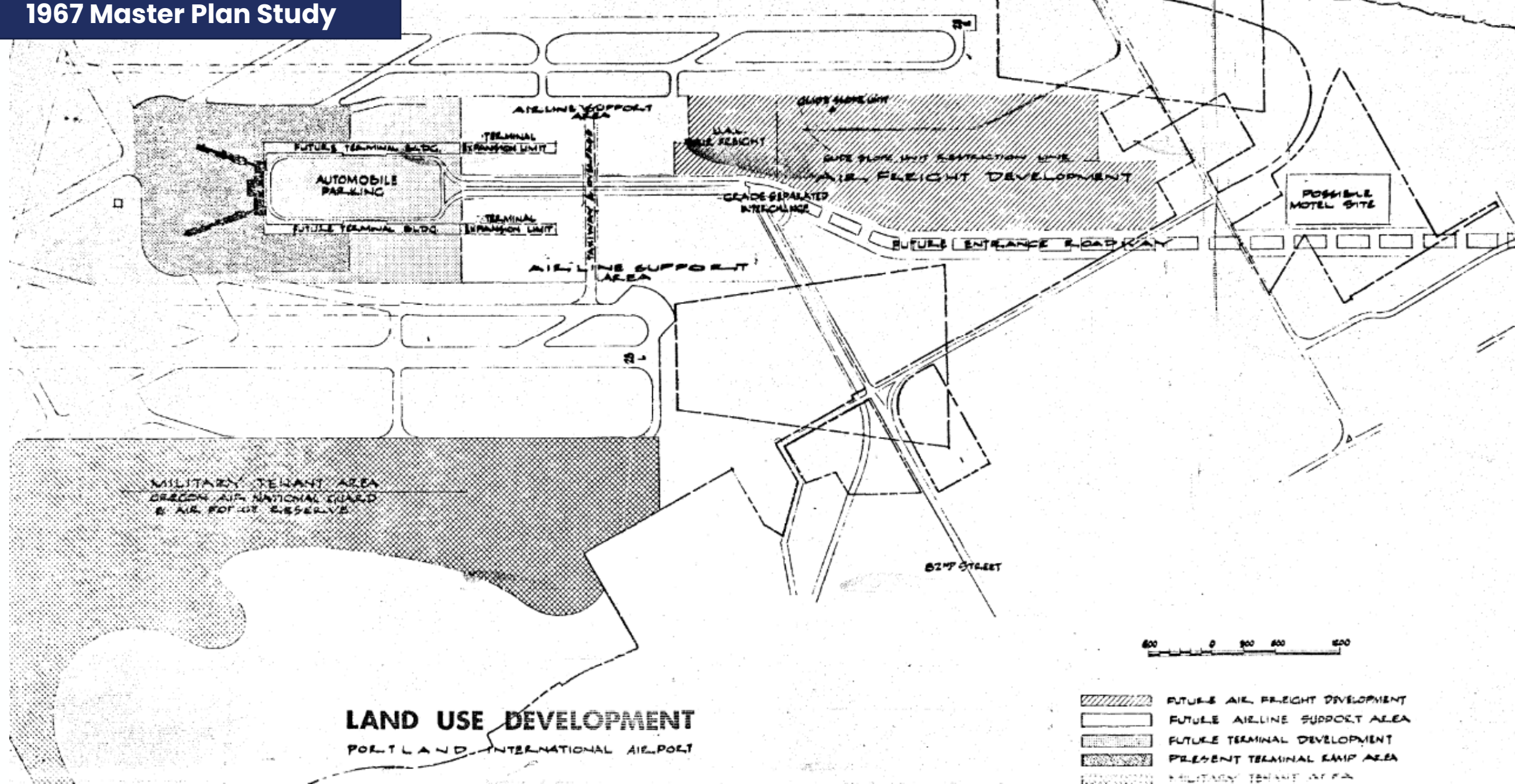
59

Gates

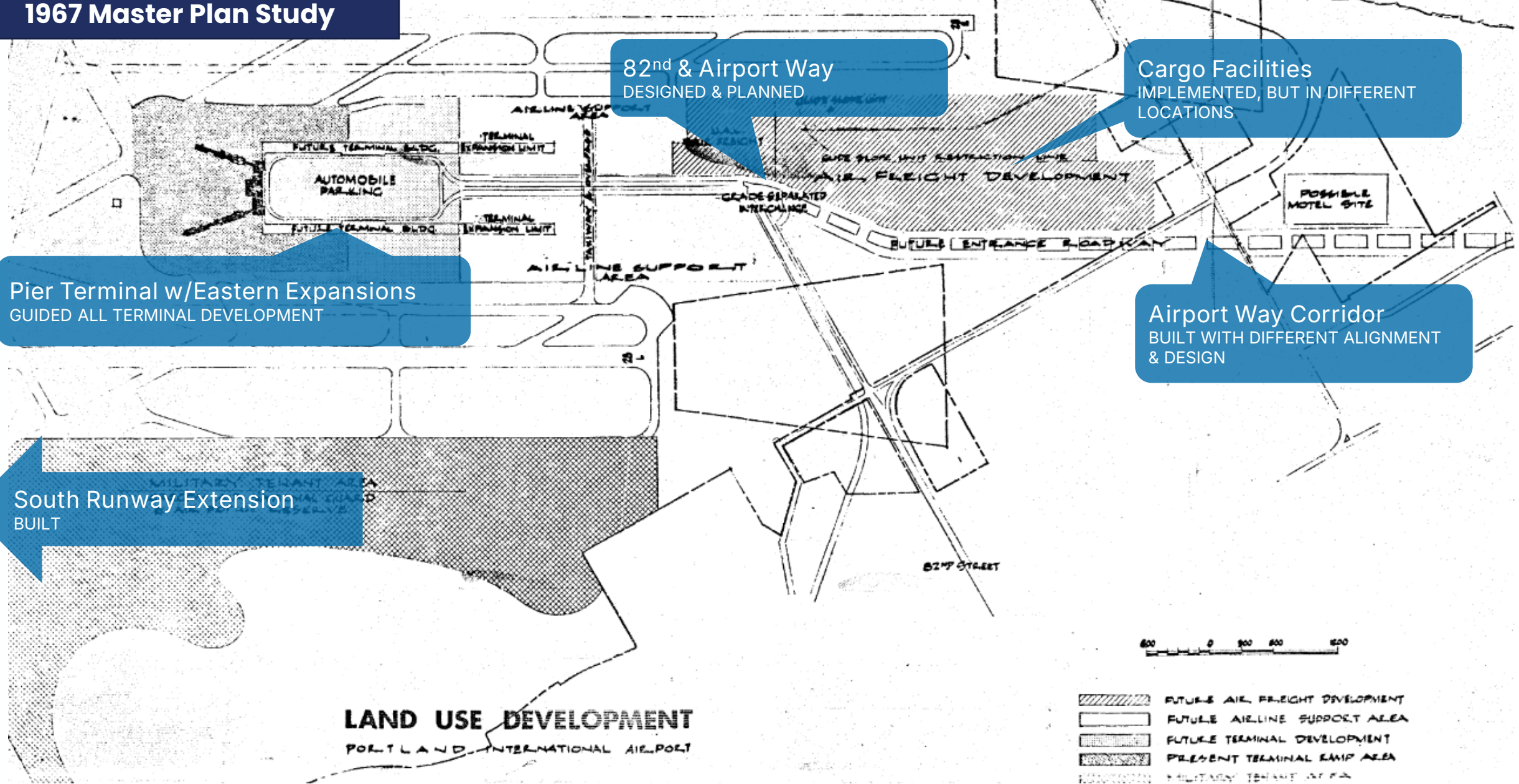
3,360

Acres

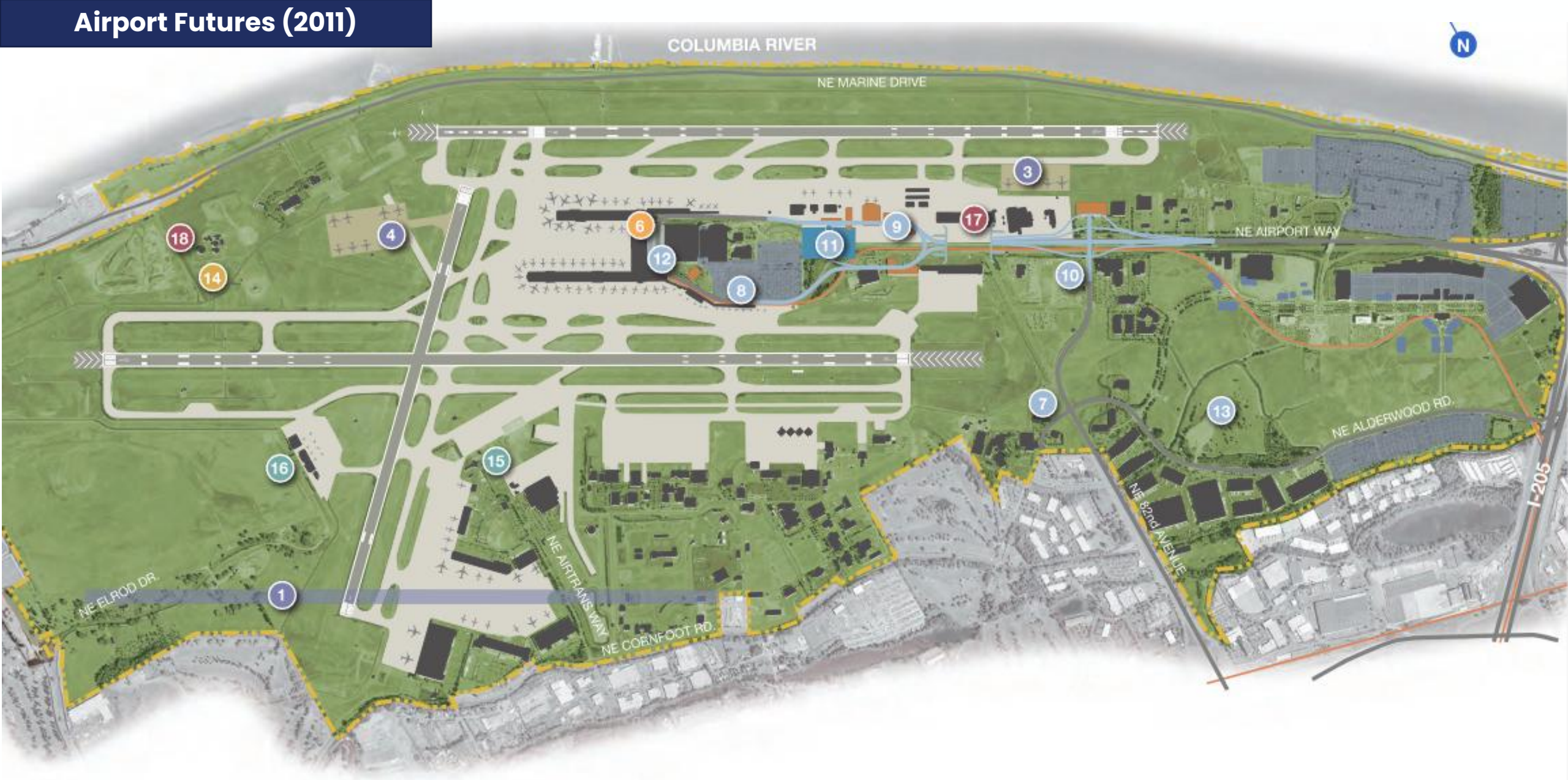




1967 Master Plan Study



Airport Futures (2011)



Airport Futures (2011)



Centralized Terminal
KEY TENET OF PDX NEXT

RON Parking
BUILT, BUT IN A DIFFERENT
LOCATION

Parking/Rental Car Expansion
BUILT, BUT WITH A REFINED LAYOUT

Airtrans Center
Cargo Infill
STUDIED & PLANNED

Conceptual Runway
Corridor
NOT CURRENTLY NEEDED

PDX 2045 Master Plan Project Overview



Renew or Replace

Invest in existing facilities to prolong useful life or develop new flexible facilities that consolidate functions.



Landside Capacity

Explore multi-modal options to manage vehicular traffic and relieve congested roadway systems.



Aircraft Gates

Determine the appropriate number of international and domestic gates needed to accommodate future demand.



Customer Experience

Maintain the “best-in-class” reputation of PDX. Enhance services and offerings for customers.



Passenger and Baggage Facilities

Assess level of service and optimize terminal capacity.



Airfield Optimization

Identify and plan for the appropriate runway and taxiway facilities.



Federal Facilities

Expand international facilities to accommodate anticipated demand and improve the passenger experience.

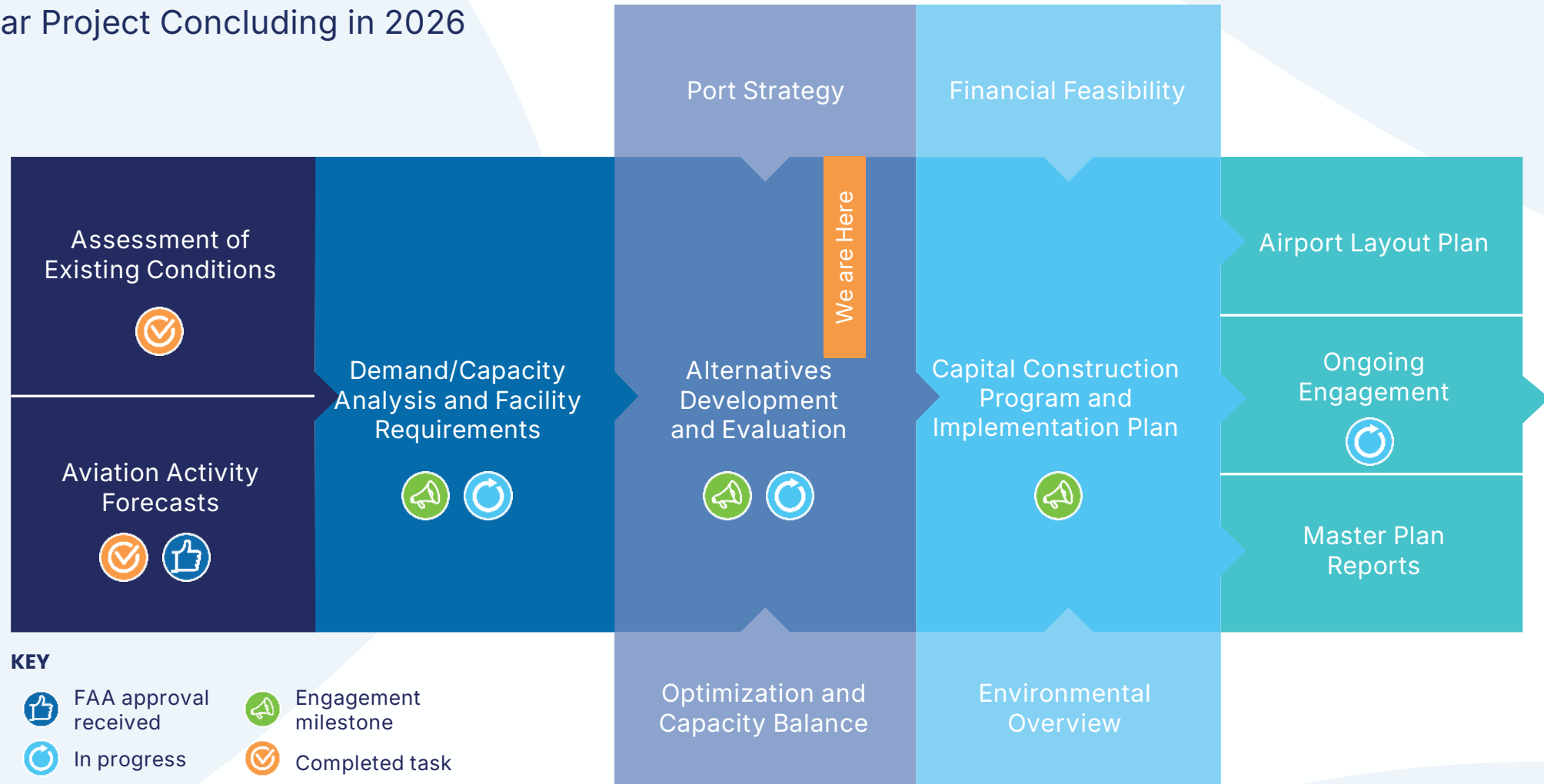


Support Functions

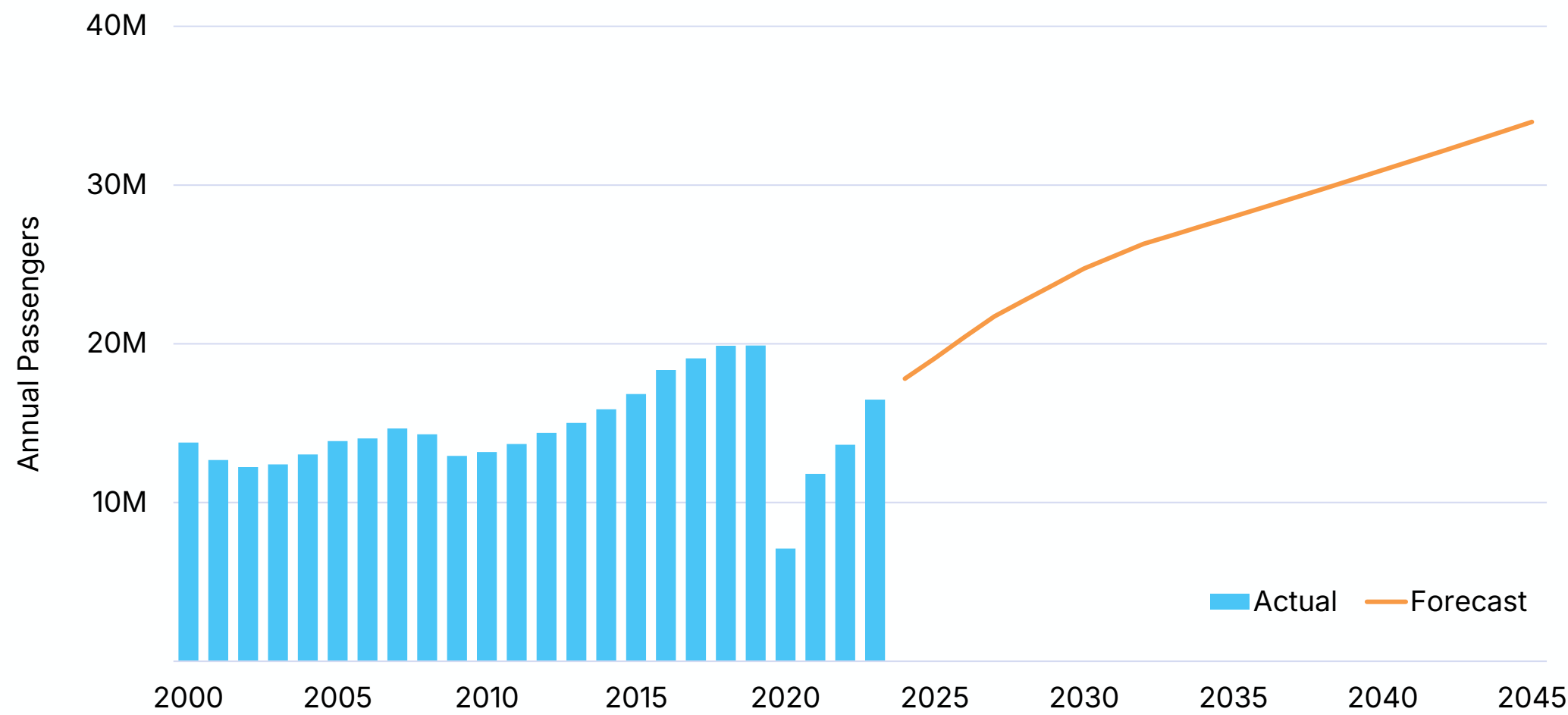
Identify opportunities for colocating critical functions and provide facilities for safe and efficient operations.

PDX 2045 Process

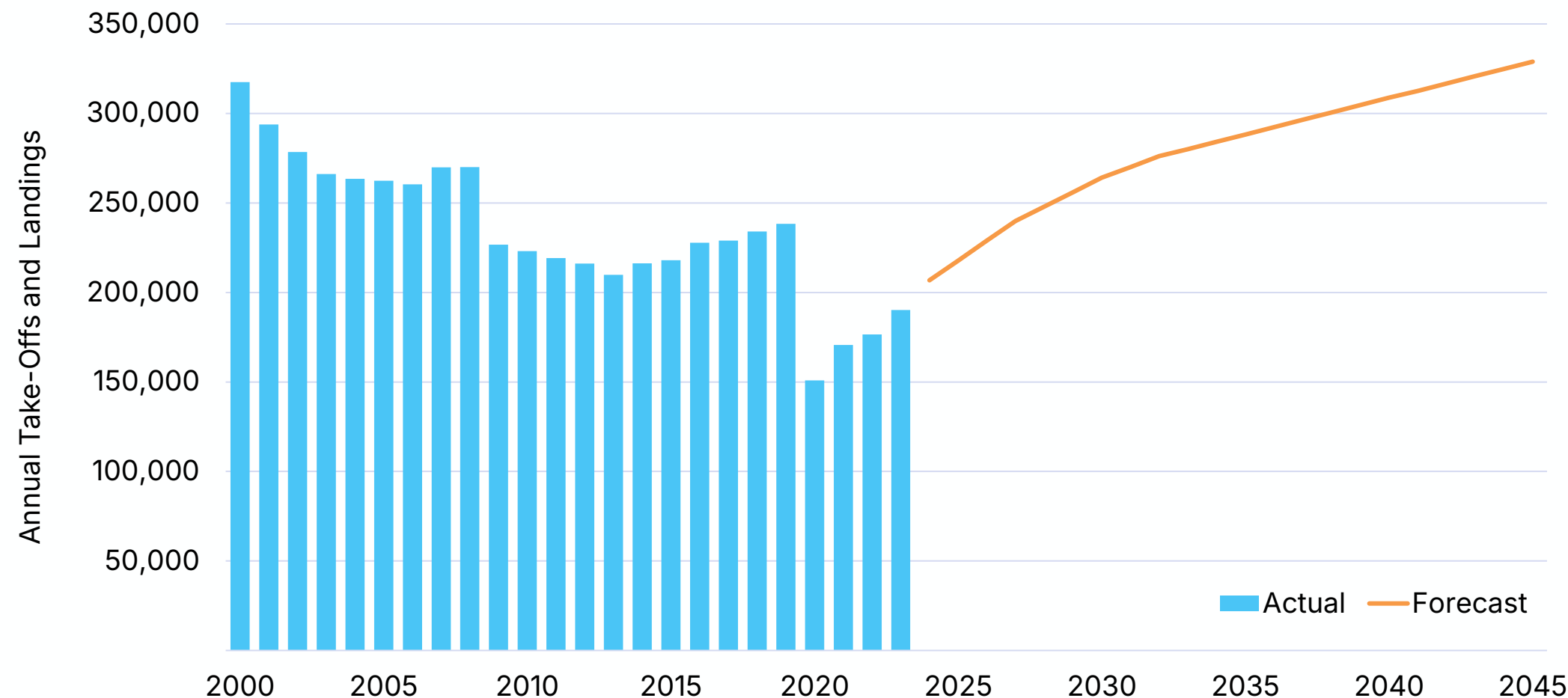
Multi-Year Project Concluding in 2026



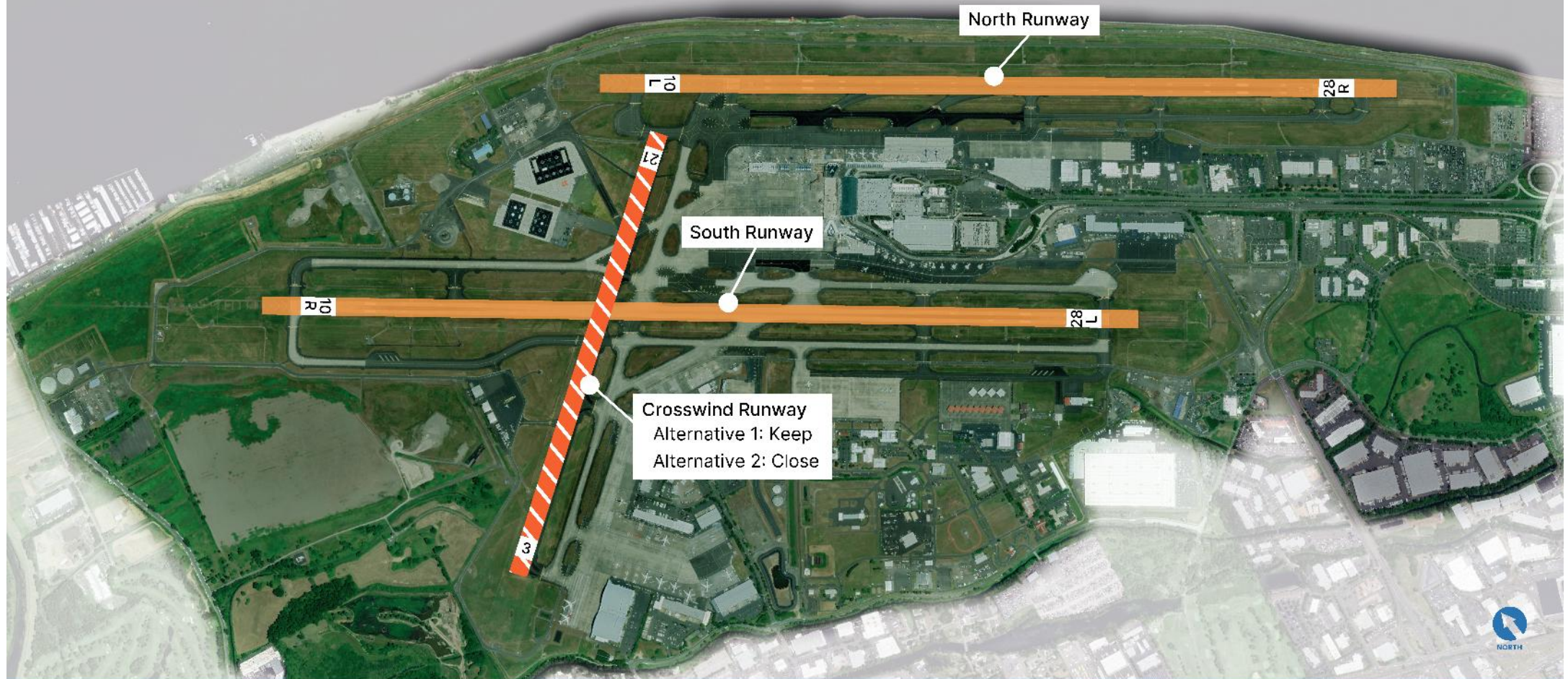
Aviation Demand Forecasts: Passengers



Aviation Demand Forecasts: Take-Offs and Landings



Airfield Alternatives



Alternative 1: Keep the Crosswind Runway, which would likely be used infrequently. According to Federal Aviation Administration data, the Crosswind Runway was used for less than 1% of flights at PDX from 2012 through 2023.

Alternative 2: Close the Crosswind Runway, which would eliminate the need and cost to maintain runway pavement that is infrequently used and would create additional space for other uses, including passenger terminal expansion.

Parking Facilities



Parking needs may not increase at the same rate as passengers due to factors beyond the Airport's control - such as changes in services provided by Rideshare app companies (Uber, Lyft, etc.) or transit services and the number of travelers using these services to get to/from PDX.

25-50%

Additional parking spaces needed by 2045 to accommodate **twice as many passengers**.

Parking Facilities



Parking needs may not increase at the same rate as passengers due to factors beyond the Airport's control - such as changes in services provided by Rideshare app companies (Uber, Lyft, etc.) or transit services and the number of travelers using these services to get to/from PDX.

25-50%

Additional parking spaces needed by 2045 to accommodate **twice as many passengers**.

Passenger Pick-Up and Drop-Off

We expect passengers to **nearly double** by 2045, requiring **additional pick-up or drop-off curb** and/or **strategies to reduce the number of vehicles** on the roadway in front of the terminal.



Passenger Pick-Up and Drop-Off Strategies



① Create Additional Curb



Short-Term Garage Level 4 = 400 feet



Eastern curb = 150 feet



Valet parking service = 100 feet



Rental Car Center curb = 100 feet

② Reduce the Number of Vehicles on the Roadway in Front of the Terminal

- Remote pick-up and drop-off in the Red and/or Blue Economy Lot
- Two-hour parking in the Short-Term Garage
- Reduce pedestrian crossing of terminal roadways
- Rideshare App pick-up and drop-off in the Transportation Plaza

Cargo, General Aviation, and Support Facilities Alternatives



Cargo: By 2045, the amount of cargo moving through PDX will nearly double. The area needed for cargo activities will increase from approximately 60 acres today to 100 acres by 2045.

General Aviation: An additional 10 acres of general aviation aircraft parking could be needed by 2045. The Port is also reserving land for potential additional general aviation providers to comply with FAA regulations.

Support Facilities: Other facilities that may need additional area or need to be relocated include public safety, airport maintenance, airline support, aircraft maintenance, flight kitchen, and wildlife management.